

Powder River Sportsmen's Club

Regular Meetings @ 7:00 P.M., First Tuesday of the Month at 2690 Broadway

22LR CAL. RIFLE SHOOT

STEEL TARGETS

The Powder River Sportsmen's Club will be sponsoring a **22 LR cal. rifle shoot** with steel silhouette targets, the event is at our **Virtue Flat** range on **April 4, 2026**.

- **8AM:** Safety briefing will be held
- **9am:** Shoot will begin

Club safety practices are to be followed and will be enforced. Check out our [Club Range Rules & Policies](#) should you wish to review them prior to the event.

This event is FREE and open to the public, the Match Director will have full authority of the entire range during scheduled events.

- Participants Under the age of 18 must be accompanied by an adult during the event.
- Age groups 10 and under will be shooting from bench positions, all others, including adults who wish to participate will shoot "off hand".
- Participants ages 15 and under will have donated ammunition to shoot at no cost.
- The only "standard velocity" ammunition allowed for the event is 22 LR, no stinger or high velocity allowed so as not to damage targets.

Please come join us for a fun & safe day at the range!

22LR
22LR CAL. RIFLE SHOOT
STEEL TARGETS
APRIL 4, 2026
VIRTUE FLATS RANGE
FREE EVENT

Plus, participants ages 15 and under will have donated ammunition to shoot at no cost. [SCAN FOR DETAILS](#)

SPONSORED BY THE
POWDER RIVER
SPORTSMEN'S CLUB

prsportsmen.com

PISTOLETTES UPDATE

The first event of the season this March was a great success. Please reach out if you would like to join this all women's group. We welcome all levels, from those that have never handled a gun to those that grew up with them.

Ladies-only shooting group, new members are always welcome!

See Calendar for range events.

Certified Range Safety Officers are present at every range event.

This is a safe, fun, and instructive way to get in some practice time at the range, and meet new friends!

Contact Bette Horan: 541-523-3659 (w) or 541-518-1986 (h).



RANGE PRIORITY AND KNOWING WHEN THE RANGE IS CLOSED

Always check the Club Calendar before planning a trip to the range. Scheduled Calendar Events always have priority over other range uses.

The entire range is closed to other uses during the following Scheduled Match events: USPSA, Cowboy Action, Steel Varmint, 1000-Yard, and Turkey Shoot.

During other Scheduled Events on the Pistol Range, the 200-Yard Rifle Range is usually open. And, during other Scheduled Events on the 200-Yard Rifle Range, the Pistol Range is usually open.

SOCIAL MEDIA

We are now on Facebook and Instagram! Information about disciplines will now be posted on the website and these new social media pages.

Be sure to like us and invite your friends!! Click on the icons now.



COWBOY ACTION

\$10 match fee. Single Action Revolvers, Lever Action Rifles, DBBL or Mod 97 shotguns. Western attire encouraged! Contact Chuck Buchanan 541-519-8550 or Dan McGuire 541-212-5840

USPSA PRACTICAL PISTOL

\$20 adults, \$10 juniors; first match is free. Round count is typically ~140, bring 200. Learn about this sport at www.uspsa.org. All match activities are conducted by NROI Certified Range Officers. Contact Phil O'Connell 208-850-1313.

STEEL VARMINT SILHOUETTE

\$10 match fee. 2 sighters + 5 shots for record at each distance: 200M Squirrels, 300M Rabbits, 385M Rock-chucks, 500M Coyotes. 5 minutes per stage. Prone, any rifle, any sights, any rest. Rifle and gear must be hand-carried to the line in one trip, no carts. No steel or ferrous bullets, No FMJ's. Helpful hint: 55g bullets often fail to topple the Coyotes; use 68g or heavier. Contact Ken Bardizian 541-519-6772 evenings.

ANNUAL CLUB CHAMPIONSHIP MATCH [NOT ON SCHEDULE FOR 2026]

Club Members only. \$10 match fee. Course of Fire: Pistol - 5 shots standing (one-handed) at 25yd bullseye, 5 shots sitting (two-handed) at 50yd bullseye, any centerfire pistol with iron sights. Rifle - 5 shots offhand & 5 shots sitting at 200yd deer target, any legal deer rifle with iron sights or scope set at $\leq 8x$. Shotgun - 20 shots at sporting clay singles. Any legal shotgun may be used. Contact

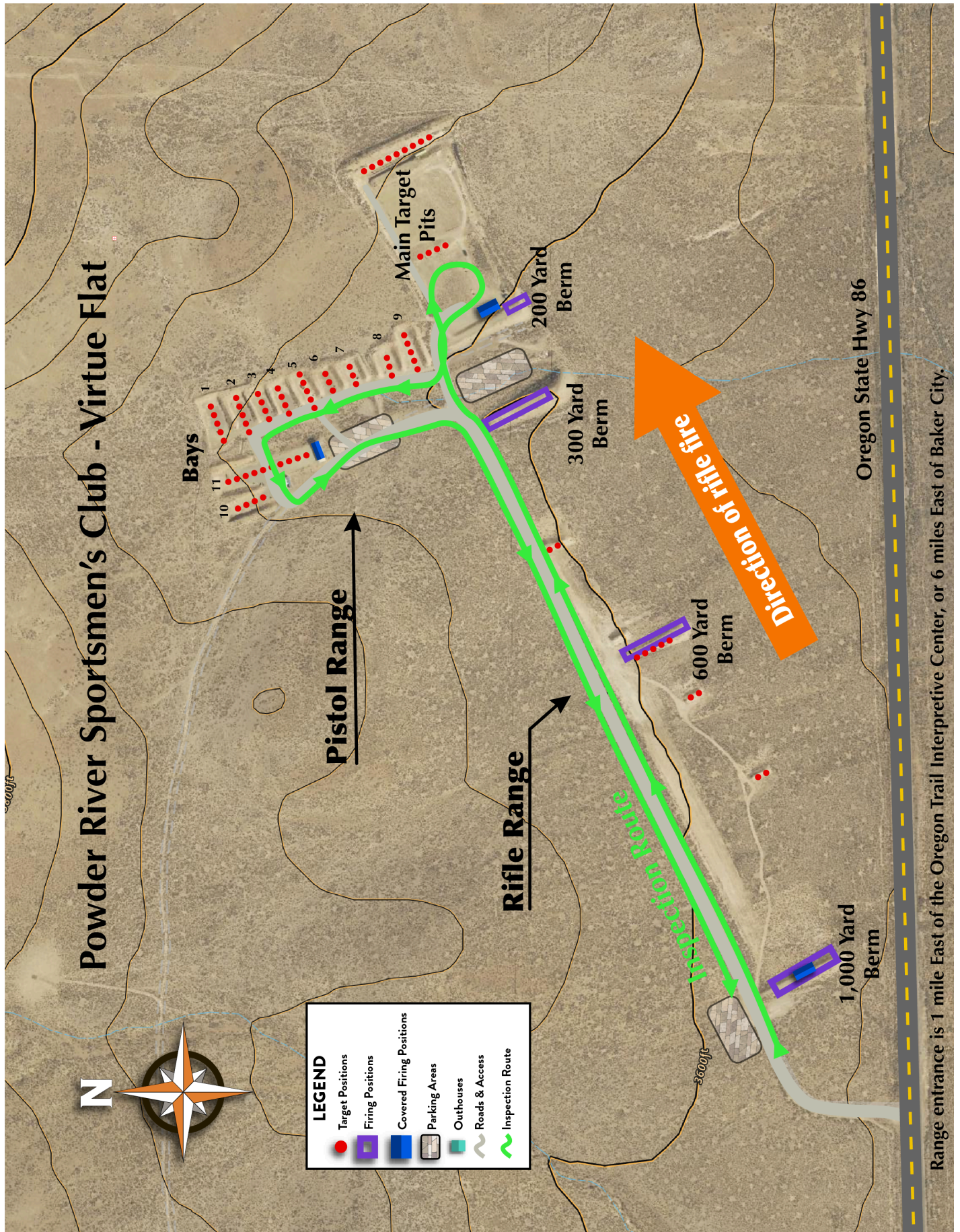
ANNUAL TURKEY SHOOT

November. \$3 per event, 6 shooters per event, \$10 prize for event winner. Events: Lucky .22 @ 10 yards, Chicken Silhouette Pistol at 50 yards, Turkey Head Silhouette Rifle at 200 yards prone with sling (no bipod or rear rest), Running Deer at 80 yards iron sights or 200 yards scoped rifle. Fun for the whole family!

NRA HIGH POWER SPORTING RIFLE

\$12 match fee. Any center-fire rifle ≤ 9.5 lbs including sight, capable of holding 4 rds. 200-yard standard high-power bullseye target. Prone: 2 sighters + 8 shots for record in 10 minutes, Offhand - 8 shots in 8 minutes, Sitting: two 4-shot strings in 30 seconds each, Prone: two 4-shot strings in 30 seconds each. Contact: Vic Savage 541-523-4462.

PRSC RANGE ~ INSPECTION ROUTE



PRSC RANGE PRIORITY

Some parts of the Virtue Flat Range cannot be used simultaneously.

Range Priority is the system we use to determine which event or group has priority over other groups when multiple parties use the range at the same time. Range Priority creates a safe range.

Range Priority is established first by the Club Calendar, and then by time of arrival and position.

All Calendar Events at the range have priority over unscheduled uses. The Director for each Calendar Event has full authority over the entire range for the time period specified on the Calendar.

For all other times, earlier arrival has priority over later arrival, and earlier position has priority over later position.

Before firing, always physically check the entire range to determine whether you have priority and whether your intended use is safe.

No person shall travel downrange of any active firing position.

The Direction of Fire on the Rifle Range is observably northeast. See map.

No firing position shall be established at any location west or east of any scheduled or pre-established active position on the Rifle Range.

The Pistol Range includes all facilities located north of the Rifle Range in the area of the 300-Yard Firing Berm. See map.

The Pistol Range can be used at the same time as the 200-Yard Rifle Range, and vice versa.

The Pistol Range CANNOT be used or accessed when a firing position has been established on the Rifle Range at any point west of the 200-Yard Firing Berm.

No firing position can be established on any part of the Rifle Range west of the 200-Yard Firing Berm when any person is on any part of the Pistol Range.

The Direction of Fire on the Pistol Range spans northwest to northeast.

The Direction of Fire in Pistol Bays is from bay-entry to rear berm only.

During scheduled matches only, the Direction of Fire within Pistol Bays may span the Practical Discipline 180° arc.

No Matches shall be scheduled simultaneously in Pistol Bays 1-9 and any other range location.

During Scheduled Matches on the 200 Yard Rifle Range, no firing is permitted in Pistol Bays 1-9.

During Scheduled Matches in Pistol Bays 1-9, no firing is permitted anywhere on the Rifle Range and no person shall access Rifle Range locations east of the 200-yard Firing Line.

If you have questions about any PRSC rule or policy, call a Club Officer for clarification.

APRIL

SUNDAY	MONDAY	TUESDAY	WEDNESDAY	THURSDAY	FRIDAY	SATURDAY
<i>MARCH</i>			APRIL			
29	30	31	1	2	3	4
	PISTOLETTES Meeting 6pm Club Meeting 7 - 8pm					COWBOY ACTION Shoot 9am
5	6	7	8	9	10	11
STEEL VARMIT Match 9Am PISTOLETTES Range Shoot 2pm				RESERVED OSP 12pm		
12	13	14	15	16	17	18
						HUNTER ED Range Day 9am
19	20	21	22	23	24	25
USPSA Practical Shoot 9am Pistolette Shoot 2pm					<i>MAY</i>	STEEL VARMIT Match 9Am
26	27	28	29	30	1	2

MAY

SUNDAY	MONDAY	TUESDAY	WEDNESDAY	THURSDAY	FRIDAY	SATURDAY
<i>APRIL</i> USPSA Practical Shoot 9am Pistolette Shoot 2pm 26	27	28	29	30	MAY 1	2 STEEL VARMIT Match 9Am
RANGE CLEAN-UP Voluntary 9am 3	4	5 PISTOLETTES Meeting 6pm Club Meeting 7 - 8pm	6	7	8	9 COWBOY ACTION Shoot 9am
10	11	12	13	14	15	16 PISTOLETTE Range Shoot 2pm
HIGH POWER Sporting Match 9am 17	18	19	20	21	22	23
24	25	26	27	28	29	30
USPSA Practical Shoot 9am 31	<i>JUNE</i> 1	2 PISTOLETTES Meeting 6pm Club Meeting 7 - 8pm	3	4 RESERVED OSP Range Shoot 12pm	5	6

Powder River Sportsmen's Club Membership Application / Renewal

All persons are required to sign this form when joining the Club or renewing a Membership.

Virtue Flat Range Rules

1. Keep the range entrance gates closed. Always lock the gate when you leave.
2. Keep firearms pointed in a safe direction.
3. Keep firearms unloaded until ready to shoot.
4. Know where other persons are at all times.
5. DO NOT fire from the 1000, 600 or 300-yard berms until you have physically checked all facilities and determined that no other persons are on ANY part of the range east of your intended firing position.
6. Do not use glass items for targets. Do not fire any rifle at the Plate Rack in the pistol bays.
7. Clean up before you leave. If you packed it in, please pack it out.
8. To prevent livestock damage, always re-install the wooden rails after using the covered shooting area on the Pistol Range.
9. Do not share any PRSC lock combination with any person.
10. Eye and ear protection is strongly recommended, and required for all minors.
11. PRSC Memberships are Individual. Each Member must complete the PRSC Range Safety Seminar before receiving authorization to independently access and use the Range. Seminar Video: www.prsportsmen.com/seminar.html

Failure to comply with rules can result in termination of membership.

* I acknowledge that I have read PRSC's Range Rules and Range Priority Policy, and I agree to abide by them.

Signature

Date

Mail form & check to Powder River Sportsmen's Club, PO Box 162, Baker City, Oregon 97814.
Annual Dues are \$60, due each January, good through December 31.

Dues paid before November 1 apply to the current year.

- | | |
|---|--|
| <input type="checkbox"/> New Membership | <input type="checkbox"/> Multi-year membership (\$60 per year) |
| <input type="checkbox"/> Renewal Membership | <input type="checkbox"/> \$10 Life Membership Renewal |

Name _____

Address _____

City/State _____ Zip _____

Phone _____ Email _____

Club newsletters will be sent to your email address. If you do not use email, check here.

I have included \$ _____ as a donation to our Range Purchase Fund.

I have included \$ _____ as a donation to our Youth Program Fund.

www.prsportsmen.com

Cash, or, Check# _____

Date _____

By Whom _____

Card issued? YES NO



Powder River Sportsmen's Club

Incident Report Form

Date of incident: _____

Date of report: _____

Officer or Trustee: _____

Time of incident: _____

Reporting party

Name & phone number: _____

Other Party members or witnesses: _____

Describe the incident. What happened, who was involved, descriptions of persons or vehicles, did you communicate with the other party, what was said, did a confrontation occur?

Attach another sheet if you need more space.

Did you take photographs? _____ If so, email them to info@prsportsmen.com, or ask a Club Officer for a cell number for texting.

For Club Use Only:

Names of Trustees on the Incident Review Committee: _____

Date of Committee Meeting: _____ Decision: _____

Signature of Chair: _____



Powder River Sportsmen's Club
P.O. Box 162
Baker City, OR 97814



Club Officers 2026



President: Ray Illingsworth
Vice President: Bill Harmon 541-519-2830
Treasurer: Arne Grammon
Secretary: Mike Quinn 541-419-6382
Range Officer: Buck Buckner

www.prsportsmen.com